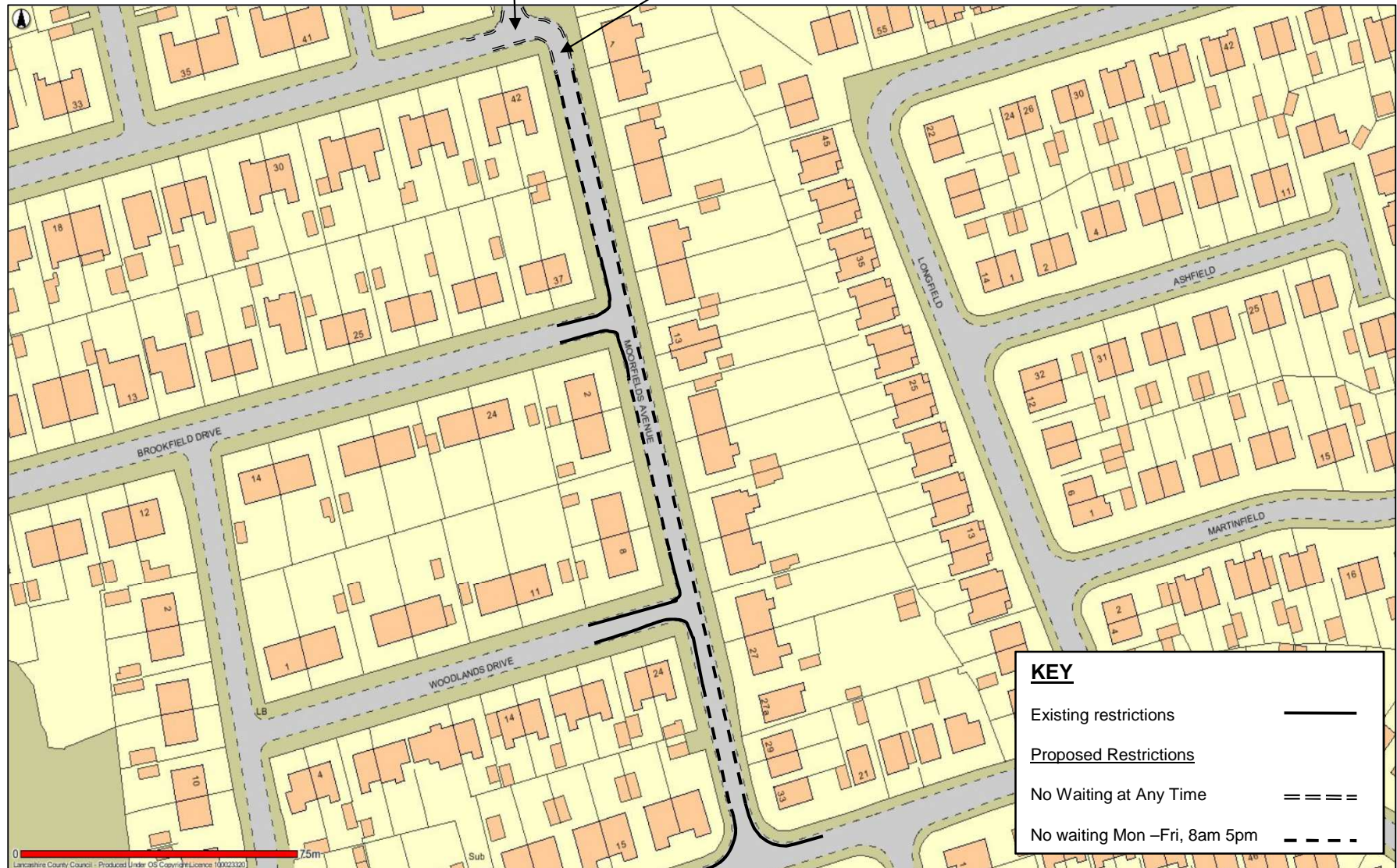


Moorfields Avenue

NWAAT
20.00m(NS) & 18.00m(SS)
west of the centreline of
Moorfields Avenue

NWAAT
13.00m both sides south of
centreline of Parklands
Drive



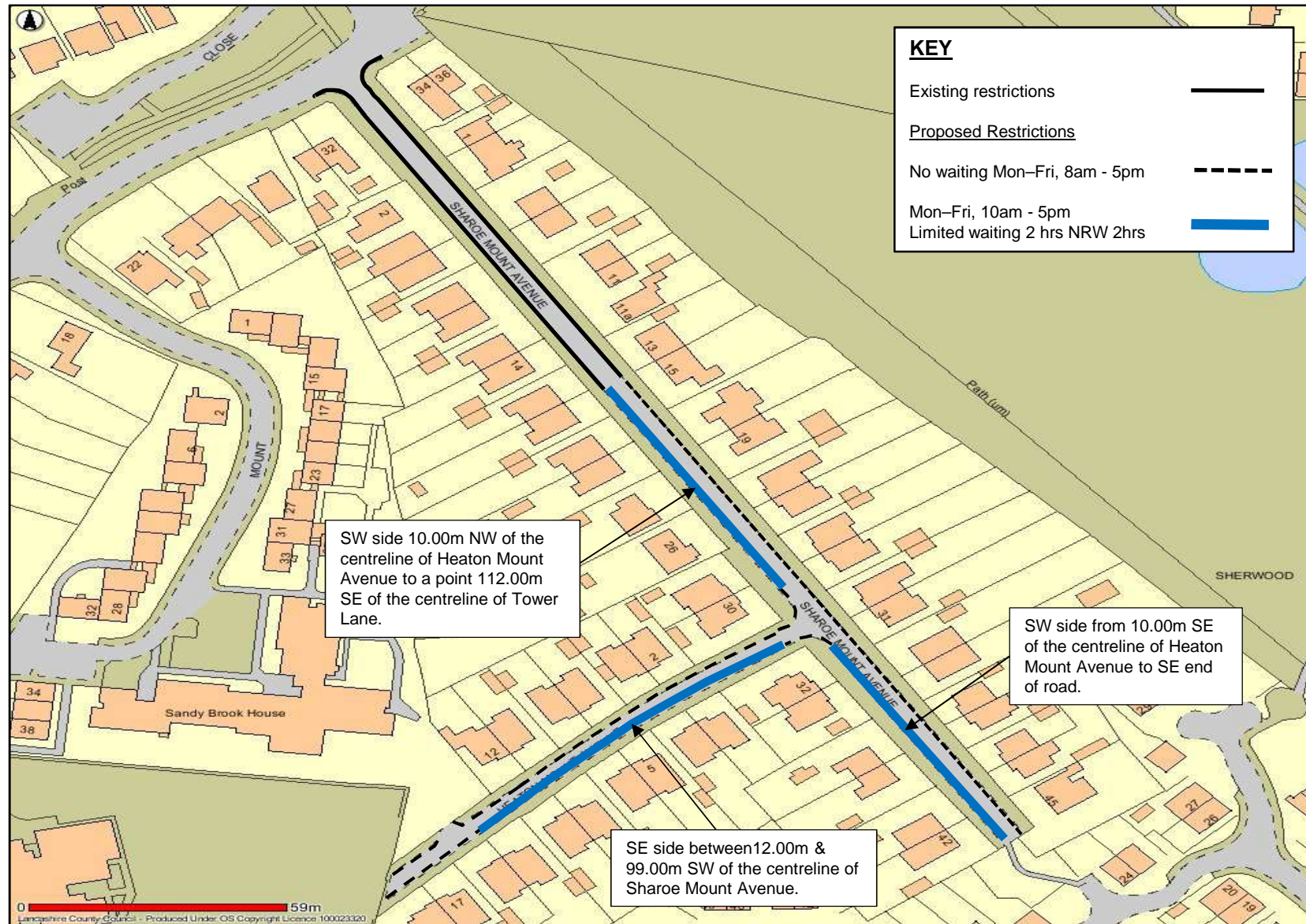
This map is reproduced from Ordnance Survey material with the Permission of Ordnance Survey on behalf of the Controller of Her Majesty's Stationery Office (C) Crown Copyright. Unauthorised reproduction may lead to prosecution or civil proceedings. Lancashire County Council - OS Licence 100023320 (C) 2016

Longfield



This map is reproduced from Ordnance Survey material with the Permission of Ordnance Survey on behalf of the Controller of Her Majesty's Stationery Office (C) Crown Copyright. Unauthorised reproduction may lead to prosecution or civil proceedings. Lancashire County Council - OS Licence 100023320 (C) 2016

Sharoe Mount Avenue & Heaton Mount Avenue



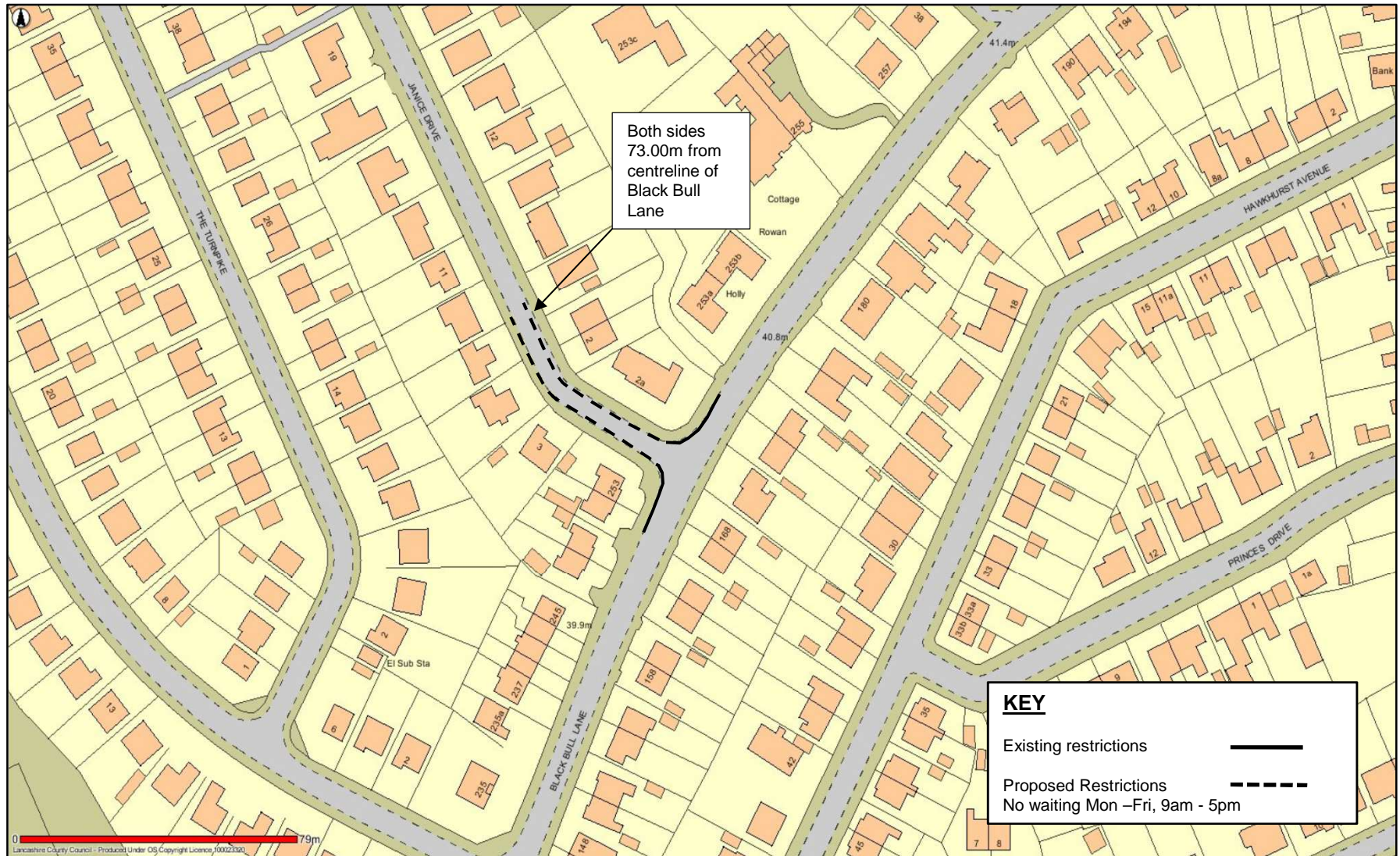
This map is reproduced from Ordnance Survey material with the Permission of Ordnance Survey on behalf of the Controller of Her Majesty's Stationery Office (C) Crown Copyright. Unauthorised reproduction may lead to prosecution or civil proceedings. Lancashire County Council - OS Licence 100023320 (C) 2016

Broadway – Proposed Parking Controls



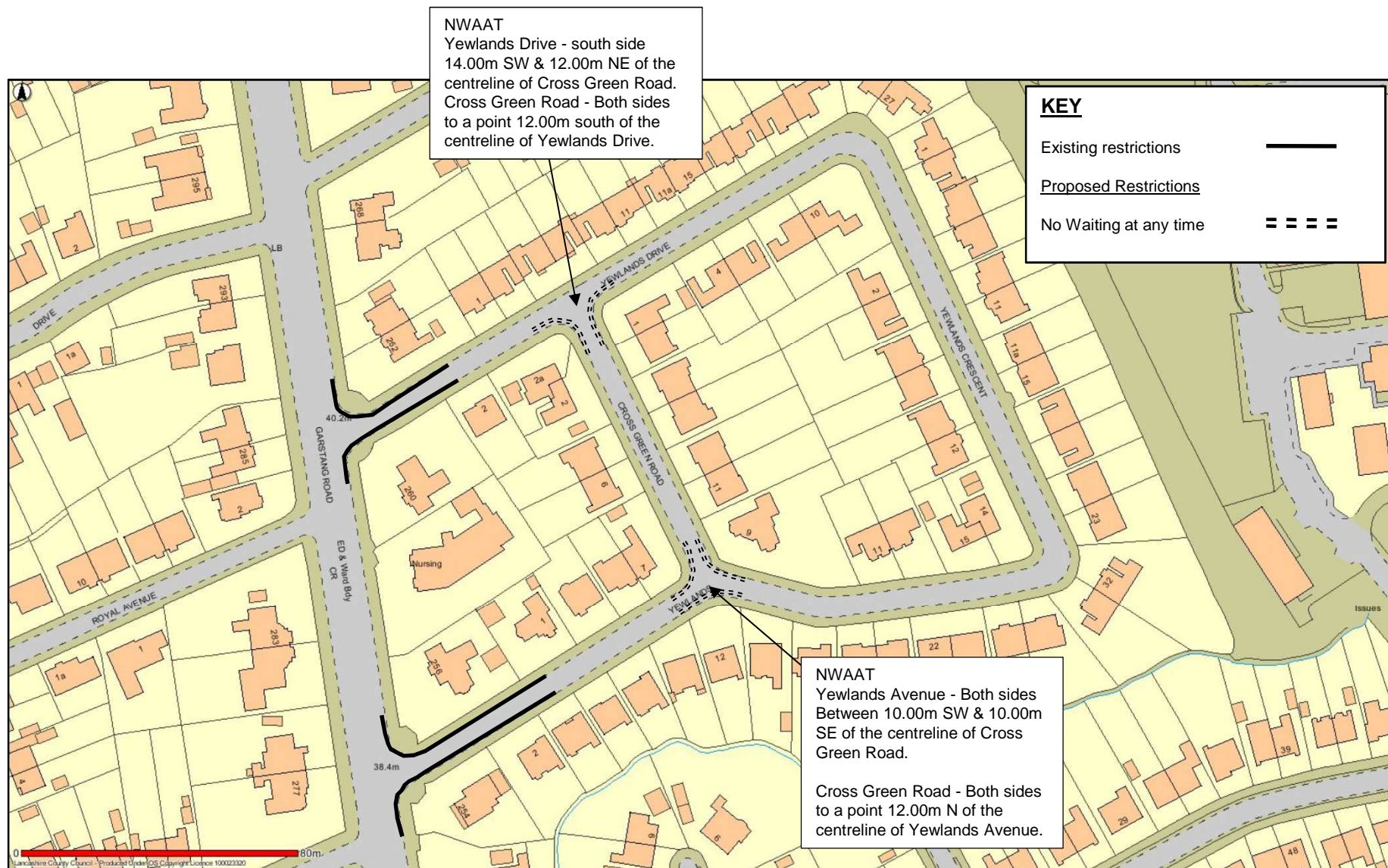
This map is reproduced from Ordnance Survey material with the Permission of Ordnance Survey on behalf of the Controller of Her Majesty's Stationery Office (C) Crown Copyright. Unauthorised reproduction may lead to prosecution or civil proceedings. Lancashire County Council - OS Licence 100023320 (C) 2016

Janice Drive



This map is reproduced from Ordnance Survey material with the Permission of Ordnance Survey on behalf of the Controller of Her Majesty's Stationery Office (C) Crown Copyright. Unauthorised reproduction may lead to prosecution or civil proceedings. Lancashire County Council - OS Licence 100023320 (C) 2016

Yewlands Drive & Cross Green Road



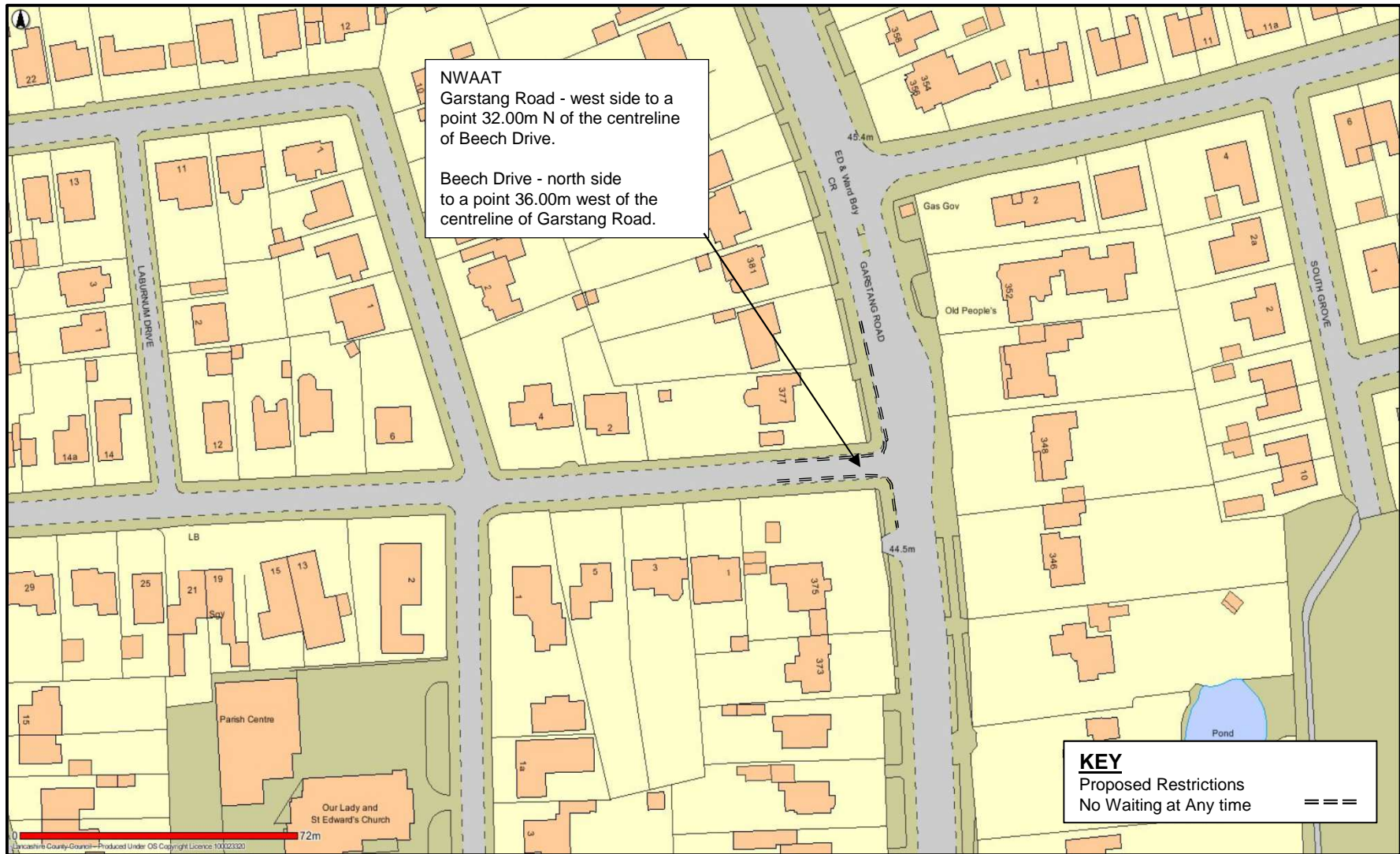
This map is reproduced from Ordnance Survey material with the Permission of Ordnance Survey on behalf of the Controller of Her Majesty's Stationery Office (C) Crown Copyright. Unauthorised reproduction may lead to prosecution or civil proceedings. Lancashire County Council - OS Licence 100023320 (C) 2016

Masonwood



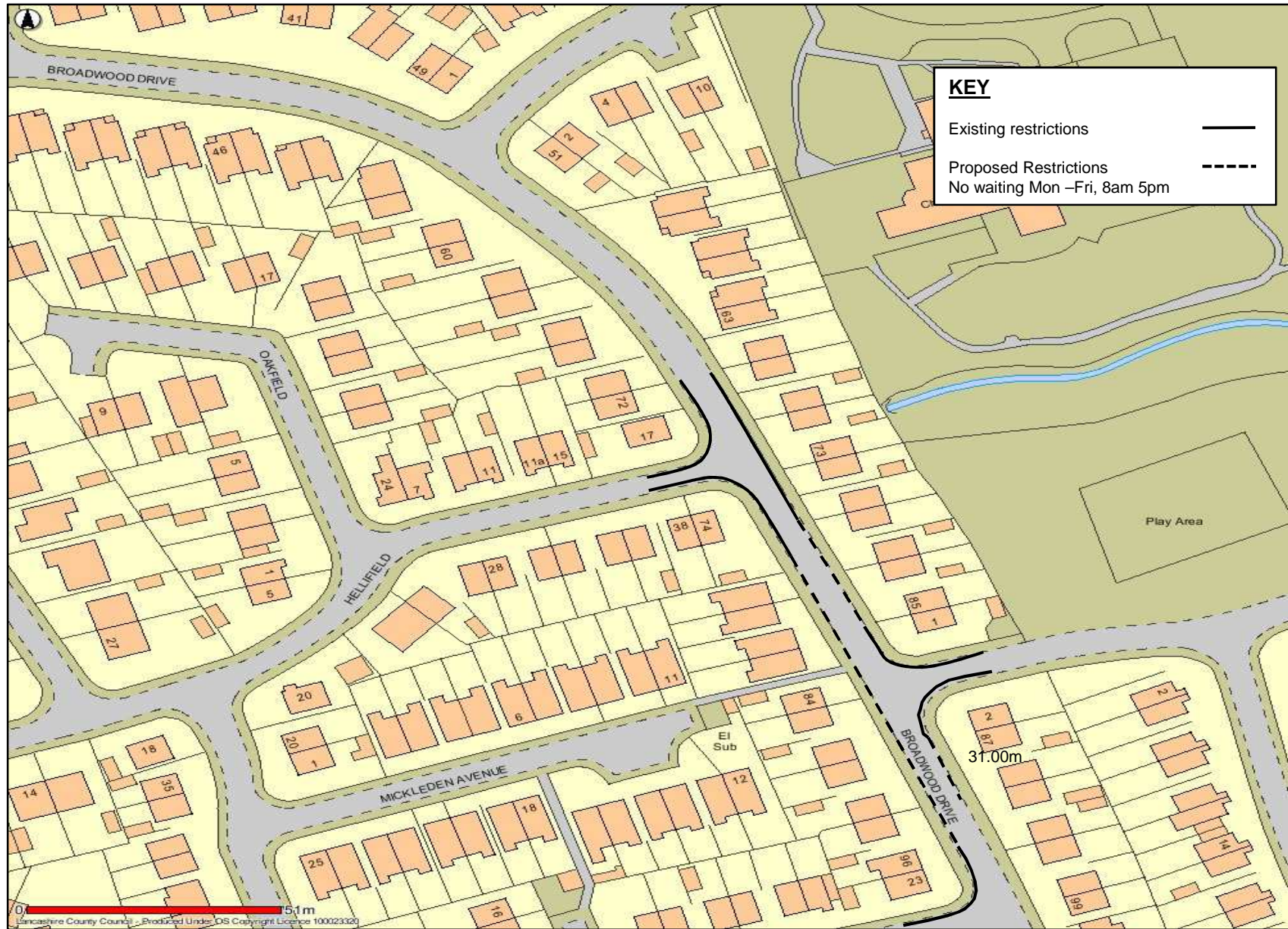
This map is reproduced from Ordnance Survey material with the Permission of Ordnance Survey on behalf of the Controller of Her Majesty's Stationery Office (C) Crown Copyright. Unauthorised reproduction may lead to prosecution or civil proceedings. Lancashire County Council - OS Licence 100023320 (C) 2016

Beech Drive



This map is reproduced from Ordnance Survey material with the Permission of Ordnance Survey on behalf of the Controller of Her Majesty's Stationery Office (C) Crown Copyright. Unauthorised reproduction may lead to prosecution or civil proceedings. Lancashire County Council - OS Licence 100023320 (C) 2016

Broadwood Drive



This map is reproduced from Ordnance Survey material with the Permission of Ordnance Survey on behalf of the Controller of Her Majesty's Stationery Office (C) Crown Copyright. Unauthorised reproduction may lead to prosecution or civil proceedings. Lancashire County Council - OS Licence 100023320 (C) 2016